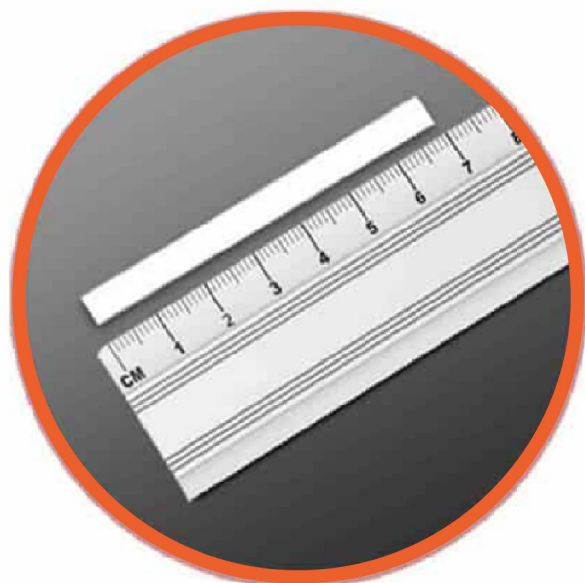



How to Measure Your Bangle Size ?

Method 1

- ❖ Bring your thumb and little fingers together.
- ❖ Measure the circumference of your hand at the widest point using tape or thread.
- ❖ Then measure that with a ruler. You will get the circumference of your bangle and compare with the measurement chart.



Method 2

 Measure the inside Diameter of the bangle already you have and compare with the below measurement chart.



| Size | Diameter Inches | Diameter Centimeters | Circumference Inches |
|------|-----------------|----------------------|----------------------|
| 2.2 | 2.125 | 5.4 | 6.67 |
| 2.4 | 2.25 | 5.7 | 7.06 |
| 2.6 | 2.375 | 6 | 7.46 |
| 2.8 | 2.5 | 6.5 | 7.85 |
| 2.10 | 2.625 | 6.7 | 8.24 |
| 2.12 | 2.75 | 7 | 8.64 |